

- NOVÉ MOŘENÍ BUKOVÉHO DŘEVA

## classic finishes / stains

buk / beech



**602**

oiled



**M16**



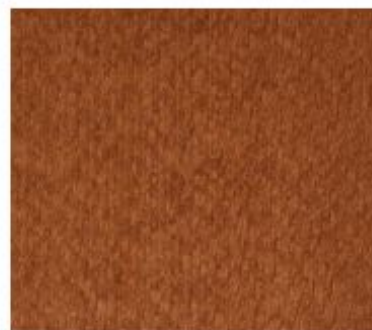
**M00**

natural



**M07**

light



**M08**

classic



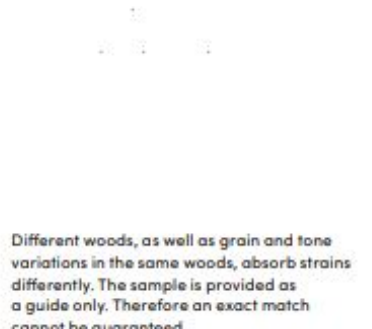
**M51**

brown

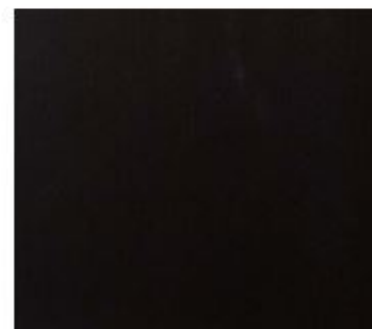


**G90**

cherry



Different woods, as well as grain and tone variations in the same woods, absorb stains differently. The sample is provided as a guide only. Therefore an exact match cannot be guaranteed.



**G80**

smoked



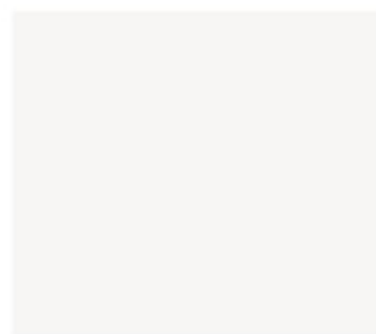
**M63**

black

- BAREVNÉ KRYCÍ LAKY BUKOVÉHO DŘEVA

supplementary  
finishes / enamel

buk / beech



**366**

white



**35B**

beige



**32P**

grey



**342**

black



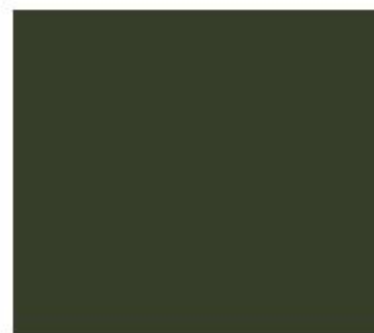
**32J**

blue



**34U**

blue



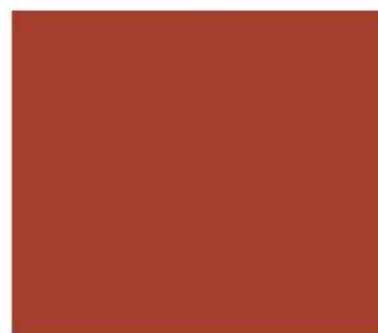
**33J**

green



**34C**

green



**388**

red



**34W**

burgundy



**34Z**

brown



**35A**

nut



**358**

creme

supplementary  
finishes / enamel

buk / beech



**35C**

green



**31Z**

navy



**390**

blue



**35D**

yellow

Different woods, as well as grain and tone variations in the same woods, absorb stains differently. The sample is provided as a guide only. Therefore an exact match cannot be guaranteed.

- BAREVNĚ MOŘENÍ BUKOVÉHO DŘEVA

supplementary  
finishes / stains

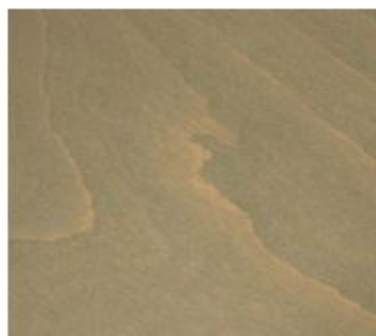
buk / beech



**M67**



**M84**



**M29**



**M28**



**M87**



# ELEGANT WISH

I. cenová kategorie  
1<sup>st</sup> price group

Složení /composition  
**100% Polyester**

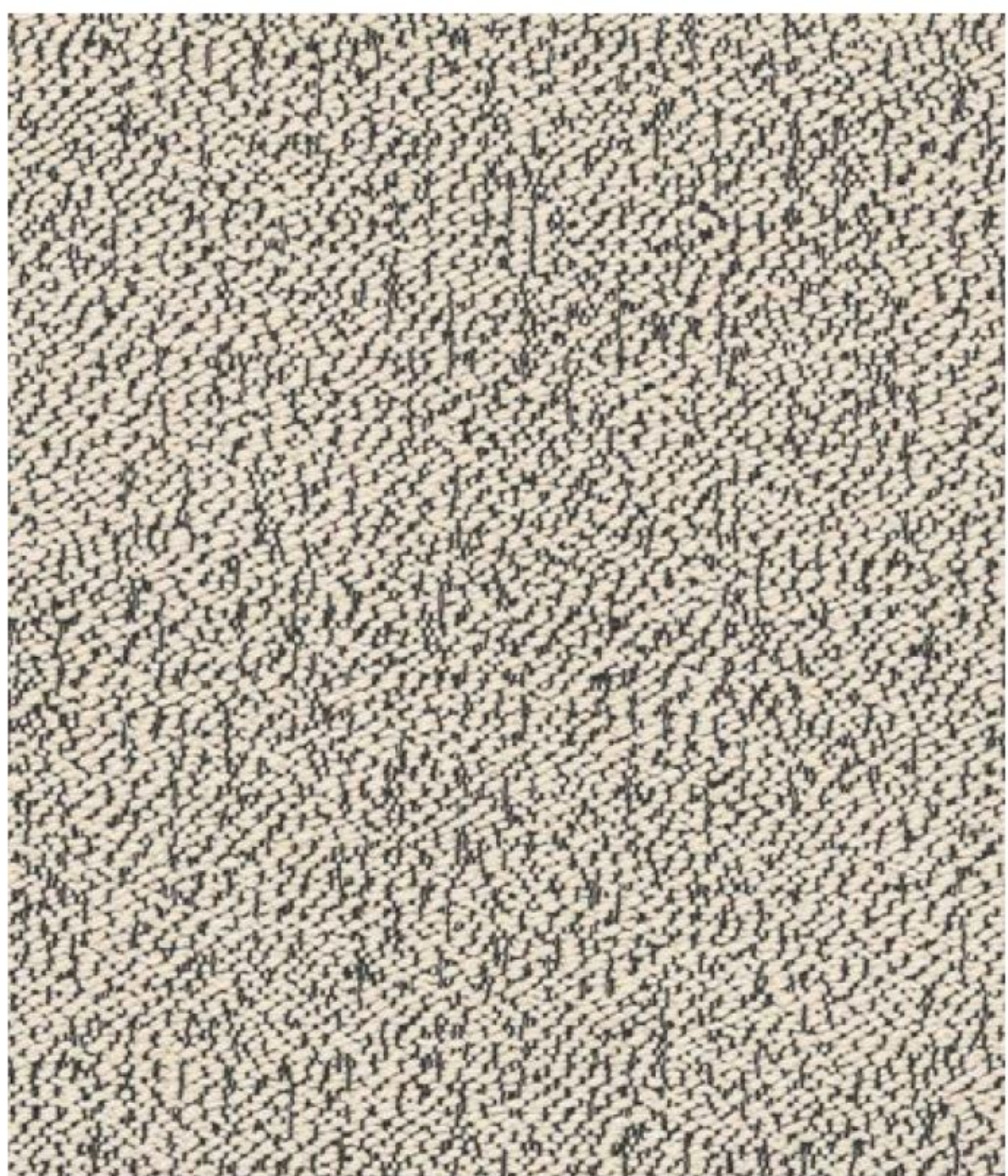
Plošná hmotnost / weight  
**480 g/m<sup>2</sup> +/-5%**

Snižená hořlavost (cigaret. test / flame retardant  
**EN1021 -1 BS5852: Part 1:1979 Ignition source 0 (Cigarette) CAL TB  
117**

Odolnost v oděru / Martindale test  
**>100.000 cykli / rubs**

Odolnost proti žmolkování / pilling resistance  
**4**

Stálobarevnost na světle / light resistance  
**5**



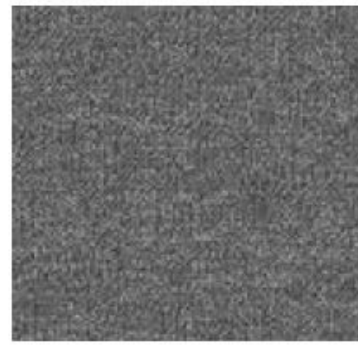


# ELEGANT WISH

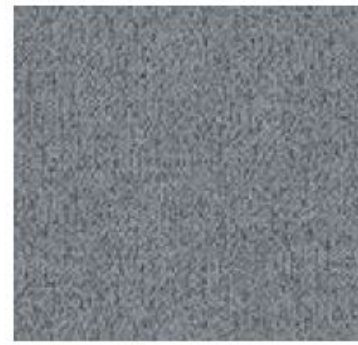
1<sup>st</sup> price group



97



87



72



34



28



64



56



54



95



04

The sample is provided as a guide only. Therefore an exact match can not be guaranteed. Color differences between individual production batches are allowed.

# ARIZONA

I. cenová kategorie

1<sup>st</sup> price group

Složení /composition

Líc / surface 91% PVC +9% PU

Podklad / backing 95% Polyester + 5% Cotton

Plošná hmotnost / weight

980 g/mb/lm (+/- 5%)

Snižená hořlavost (cigaret. test / flame retardant

**BS 5852 Part 1; EN 1021-1/2;**

**CA Tech. Bull. 117:2013/NFPA 260 - Cigarette Test**

Odolnost v oděru / Martindale test

**>800.000 cyklů / rubs**

pilling resistance:

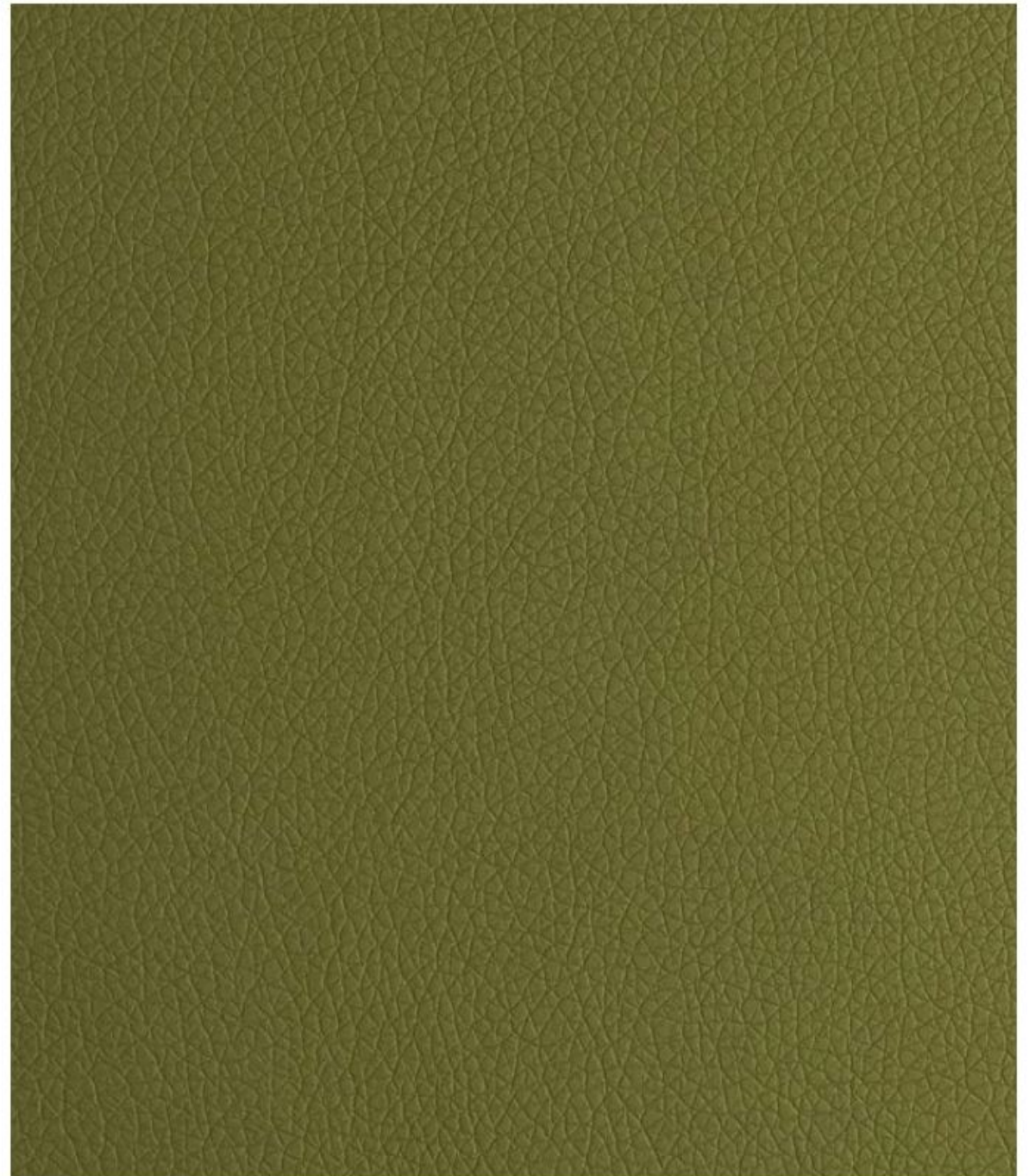
-

Stálobarevnost na světle / light resistance

**5**

Other fabric properties:

easy care, anti-bacterial, resistance to urine, resistance to hospital - grade disinfectant cleaner





# ARIZONA

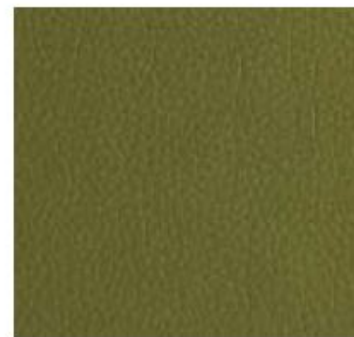
1<sup>st</sup> price group



White



Ice



Avocat



Forest



Dark brown



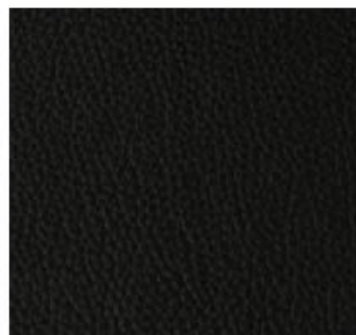
Cuoio



Mostaza



Blue



Black



Grey



Ash



Light grey

The sample is provided as a guide only. Therefore an exact match can not be guaranteed. Color differences between individual production batches are allowed.



# LUIS

I. cenová kategorie  
1<sup>st</sup> price group

Složení /composition

**100% Polyester**

Plošná hmotnost / weight

**350 g/m<sup>2</sup> +/-5%**

Snižená hořlavost (cigaret. test / flame retardant

**EN1021 -1 BS5852: Part 1:1979 Ignition source 0 (Cigarette) CAL TB  
117**

Odolnost v oděru / Martindale test

**20000-30000 cyklů / rubs**

Odolnost proti žmolování / pilling resistance

**4**

Stálobarevnost na světle / light resistance :

**3-5**

**water repellent**

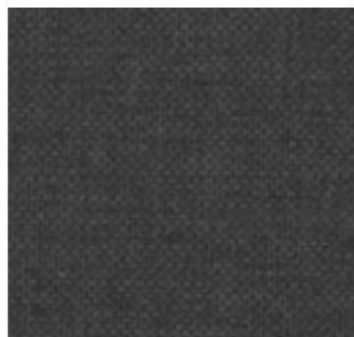


# LUIS

1<sup>st</sup> price group



74



97



34



85



83



4



16



17



48



52

The sample is provided as a guide only. Therefore an exact match can not be guaranteed. Color differences between individual production batches are allowed.



# MILTON NEW

I. cenová kategorie  
1<sup>st</sup> price group

Složení /composition  
**97% Polyester, 3% Nylon**

Plošná hmotnost / weight  
**310 g/m<sup>2</sup> ± 5%**

Snižená hořlavost (cigaret. test / flame retardant  
**BS 5852: Part 1: 1979, source 0 (cigarette)**

Odolnost v oděru / Martindale test  
**90.000 cykli / rubs**

Odolnost proti žmolcování / pilling resistance  
**5**

Stálobarevnost na světle / light resistance  
**4**





# MILTON NEW

1<sup>st</sup> price group



23



03



04



06



11



16



17



22



13



20



18

The sample is provided as a guide only. Therefore an exact match can not be guaranteed. Color differences between individual production batches are allowed.

# ETNA

I. cenová kategorie  
1<sup>st</sup> price group

Složení /composition

**100% PES**

Plošná hmotnost / weight

**310 g/m<sup>2</sup> ± 5%**

Snižená hořlavost (cigaret. test / flame retardant

**EN1021 -1 BS5852: Part 1:1979 Ignition source 0 (Cigarette) CAL TB  
117**

Odolnost v oděru / Martindale test

**80.000-90.000 cykli / rubs**

Odolnost proti žmolování / pilling resistance

**4**

Stálobarevnost na světle / light resistance

**5**





# ETNA



90



15



91



95



38



96



37



80



85



24

1<sup>st</sup> price group

The sample is provided as a guide only. Therefore an exact match can not be guaranteed. Color differences between individual production batches are allowed.



# INARI

I. cenová kategorie

1<sup>st</sup> price group

Složení /composition

**100% PP**

Plošná hmotnost / weight

**260 g/m<sup>2</sup> ± 5%**

Snižená hořlavost (cigaret. test / flame retardant

**EN1021 -1 BS5852: Part 1:1979 Ignition source 0 (Cigarette) CAL TB  
117**

Odolnost v oděru / Martindale test

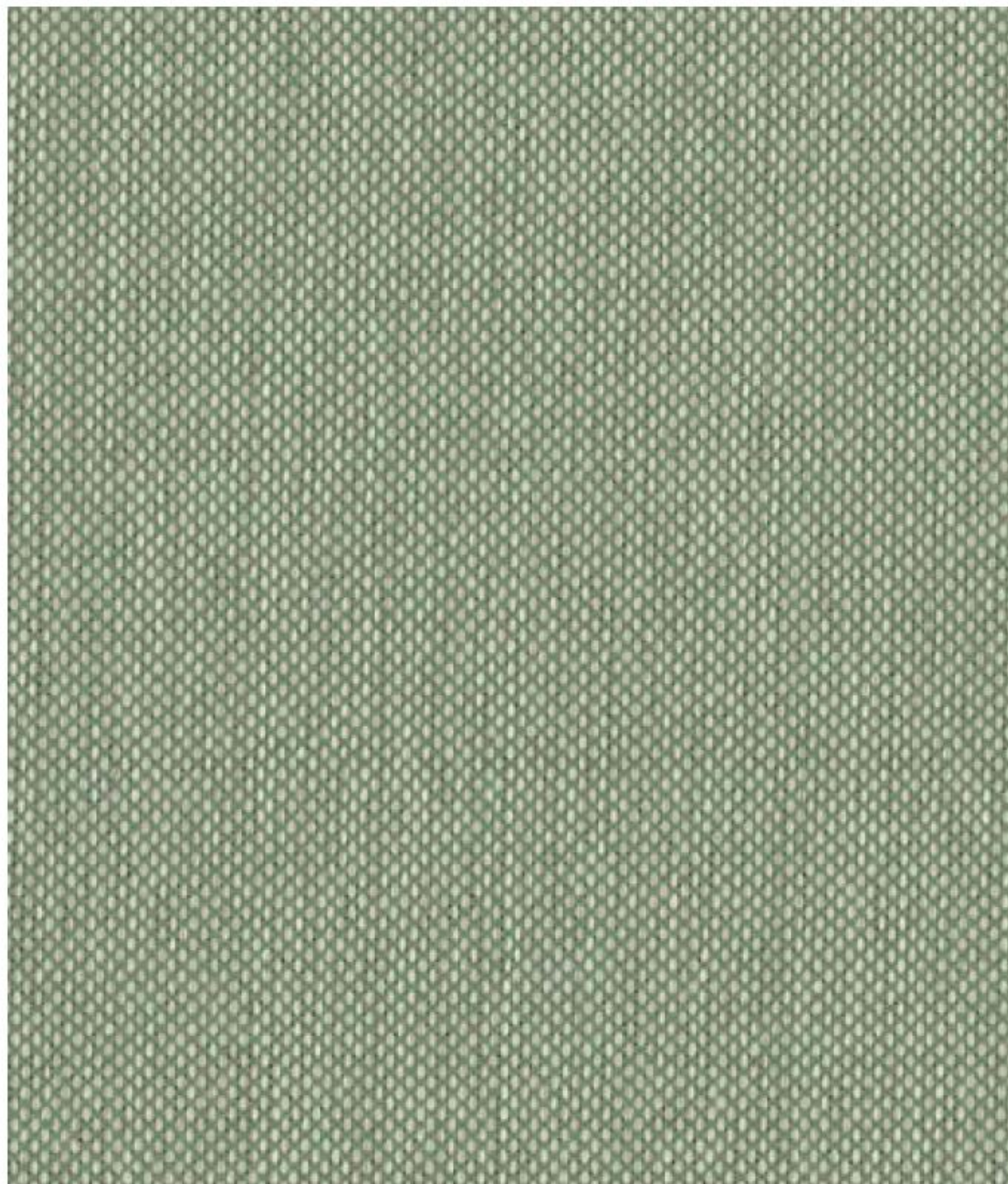
**45.000-50.000 cyklů / rubs**

Odolnost proti žmolování / pilling resistance

**4**

Stálobarevnost na světle / light resistance

**5**



# INARI

1<sup>st</sup> price group



22



26



90



27



96



100



34



80

The sample is provided as a guide only. Therefore an exact match can not be guaranteed. Color differences between individual production batches are allowed.



# MATT VELVET

I. cenová kategorie  
1<sup>st</sup> price group

Složení /composition

**100% Polyester**

Plošná hmotnost / weight

**430 g/m<sup>2</sup> +/-5%**

Snižená hořlavost (cigaret. test / flame retardant

**EN1021 -1 BS5852: Part 1:1979 Ignition source 0 (Cigarette) CAL TB  
117**

Odolnost v oděru / Martindale test

**>100.000 cykli / rubs**

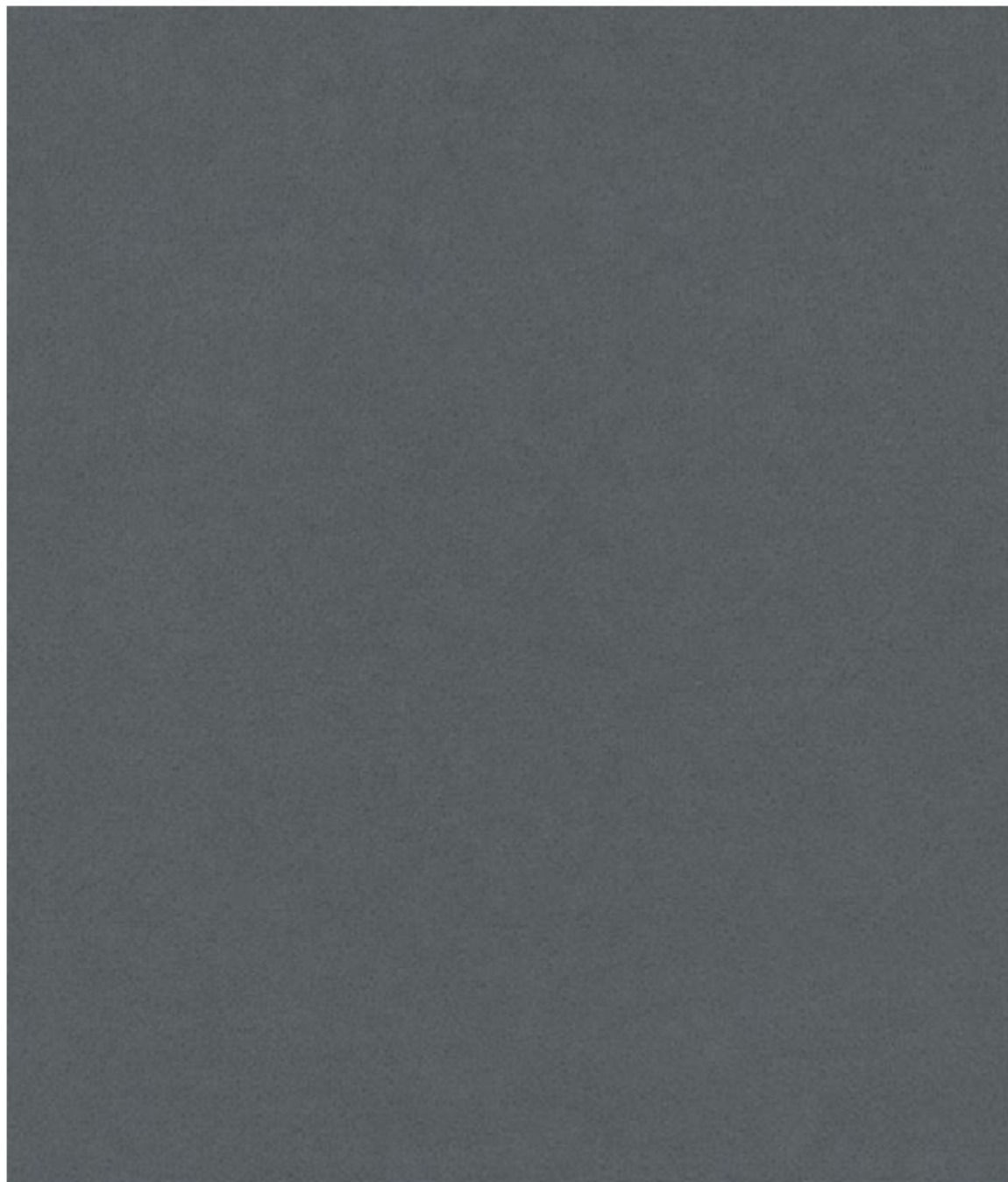
Odolnost proti žmolkování / pilling resistance

**4-5**

Stálobarevnost na světle / light resistance

**4**

**vodoodpudivá / water repellent**





# MATT VELVET

1<sup>st</sup> price group



6



9



29



38



97



85



79



68



99

The sample is provided as a guide only. Therefore an exact match can not be guaranteed. Color differences between individual production batches are allowed.

# HIMALAYA

II. cenová kategorie  
2<sup>nd</sup> price group

Složení / composition  
**100% recycled polyester**

Plošná hmotnost / weight  
**500 g/m<sup>2</sup> ± 5%**

Snižená hořlavost (cigaret. test / flame retardant  
**CAL TB 117**

Odolnost v oděru / Martindale test  
**100.000 cyklů / rubs**

Odolnost proti žmolkování / pilling resistance  
**4**

Stálobarevnost na světle / light resistance  
**5**



# HIMALAYA

2<sup>nd</sup> price group



900



904



100



908



105



800



803



806



606



602

The sample is provided as a guide only. Therefore an exact match can not be guaranteed. Color differences between individual production batches are allowed.



II. cenová kategorie

2<sup>nd</sup> price group

Složení /composition

**100% Polyester**

Plošná hmotnost / weight

**390 g/m<sup>2</sup> ± 5%**

Snižená hořlavost (cigaret. test / flame retardant

**BS 5852: Part 1: 1979, source 0 (cigarette)**

Odolnost v oděru / Martindale test

**50.000 cyklů / rubs**

Odolnost proti žmolkování / pilling resistance

**4**

Stálobarevnost na světle / light resistance

**4/5**

**Jednoduché čištění vodou / easy clean with water**

**Vhodná k domácím mazlíčkům / pet friendly**

**Antivirová, poskytuje trvalou ochranu před viry, bakteriemi a plísněmi. / virus protect**

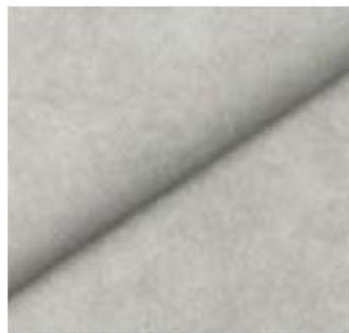


# ZOYA

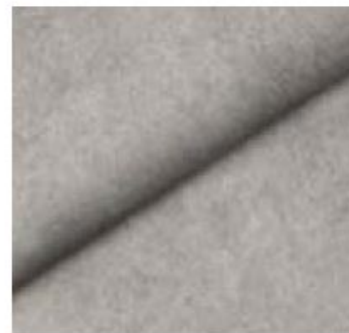
2<sup>nd</sup> price group



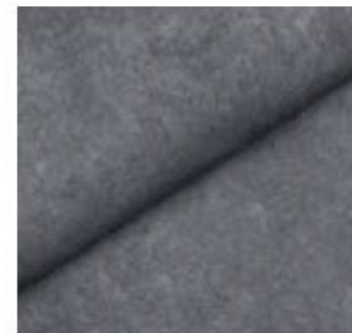
03



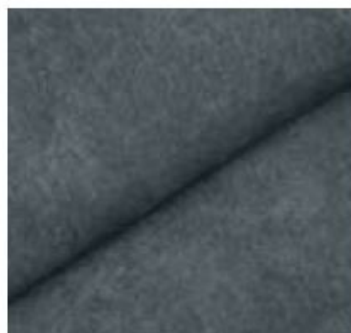
01



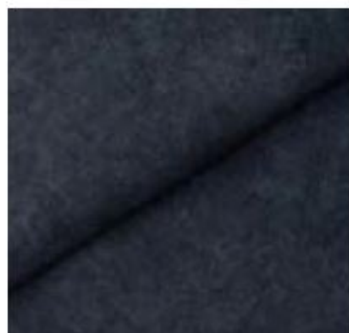
02



11



08



09



14



13



# HAZEL

II. cenová kategorie

2<sup>nd</sup> price group

Složení / composition

**100% recycled polyester**

Plošná hmotnost / weight

**284 g/m<sup>2</sup> ± 5%**

Snižená hořlavost (cigaret. test / flame retardant

**BS 5852: Part 1: 1979, source 0 (cigarette)**

Odolnost v oděru / Martindale test

**50.000 cyklů / rubs**

Odolnost proti žmolkování / pilling resistance

**5**

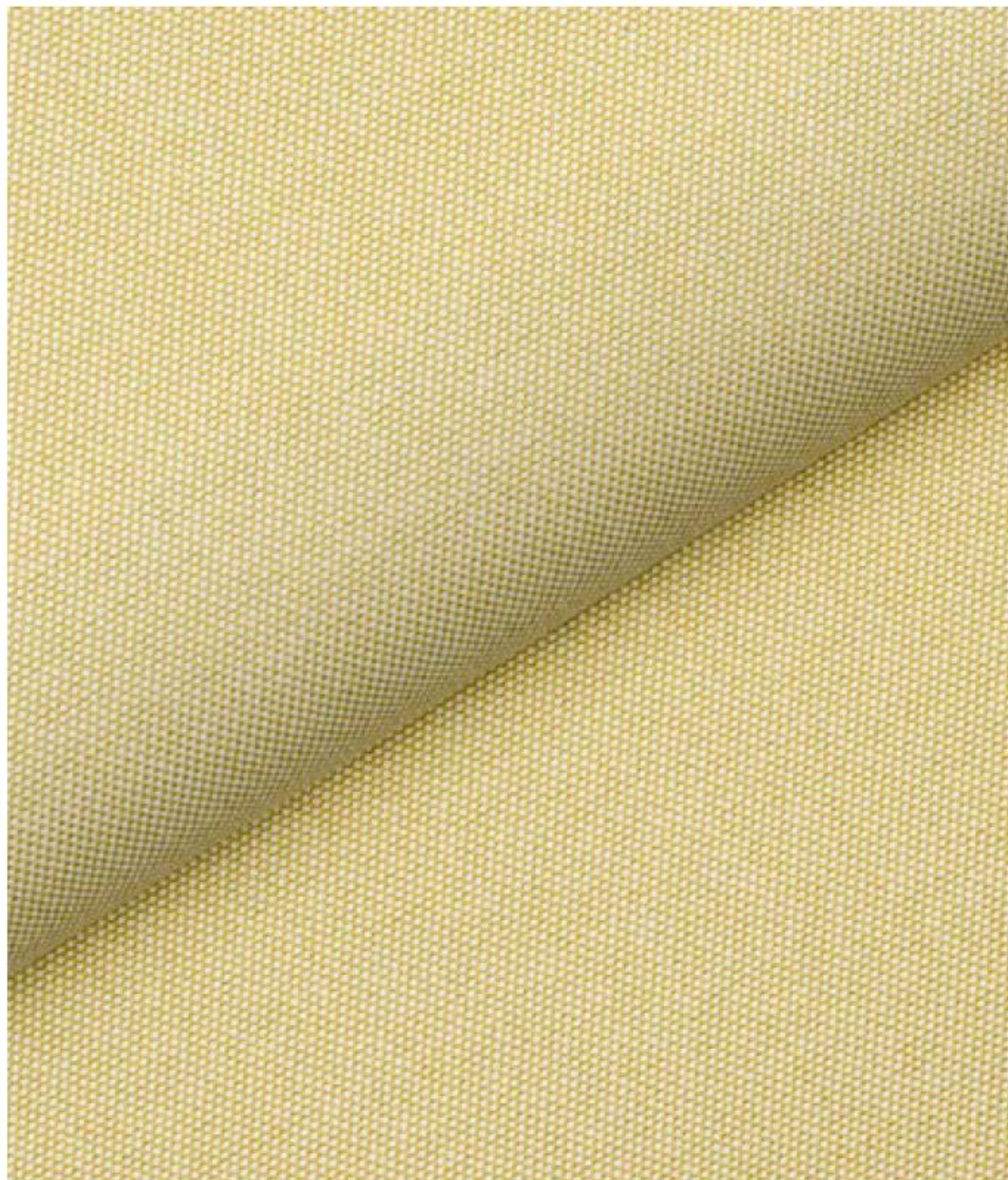
Stálobarevnost na světle / light resistance

**7**

**Vodoodpudivá / water repellent**

**Jednoduché čištění vodou / easy clean with water**

**Vhodná k domácím mazlíčkům / pet friendly**





# HAZEL

2<sup>nd</sup> price group



01



03



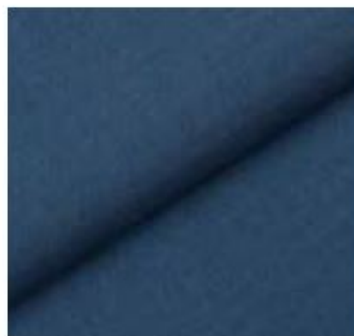
06



07



15



13

# AVENA

II. cenová kategorie

2<sup>nd</sup> price group

Složení /composition

**59% Polyamide, 23% Polyester, 13% Viscose, 5% Linen**

Plošná hmotnost / weight

**550 g/m<sup>2</sup> ± 5%**

Snižená hořlavost (cigaret. test / flame retardant

**BS 5852: Part 1: 1979, source 0 (cigarette)**

Odolnost v oděru / Martindale test

**50.000 cyklů / rubs**

Odolnost proti žmolování / pilling resistance

**4**

Stálobarevnost na světle / light resistance

**5**

Jednoduché čištění vodou / easy water cleaning

Vodoodpudivá / water repellent





# AVENA

2<sup>nd</sup> price group



06



07



09



11



02



01



03



# NORDIC

II. cenová kategorie

2<sup>nd</sup> price group

Složení /composition

**50% polyester, 35% akryl, 15% polyamid**

Plošná hmotnost / weight

**410 gr/m<sup>2</sup>**

Snižená hořlavost (cigar. test / flame retardant

**EN1021 1-2, BS5852 0-1**

Odolnost v oděru / Martindale test

**100.000 cyklů / rubs**

Odolnost proti žmolování / pilling resistance

**5**

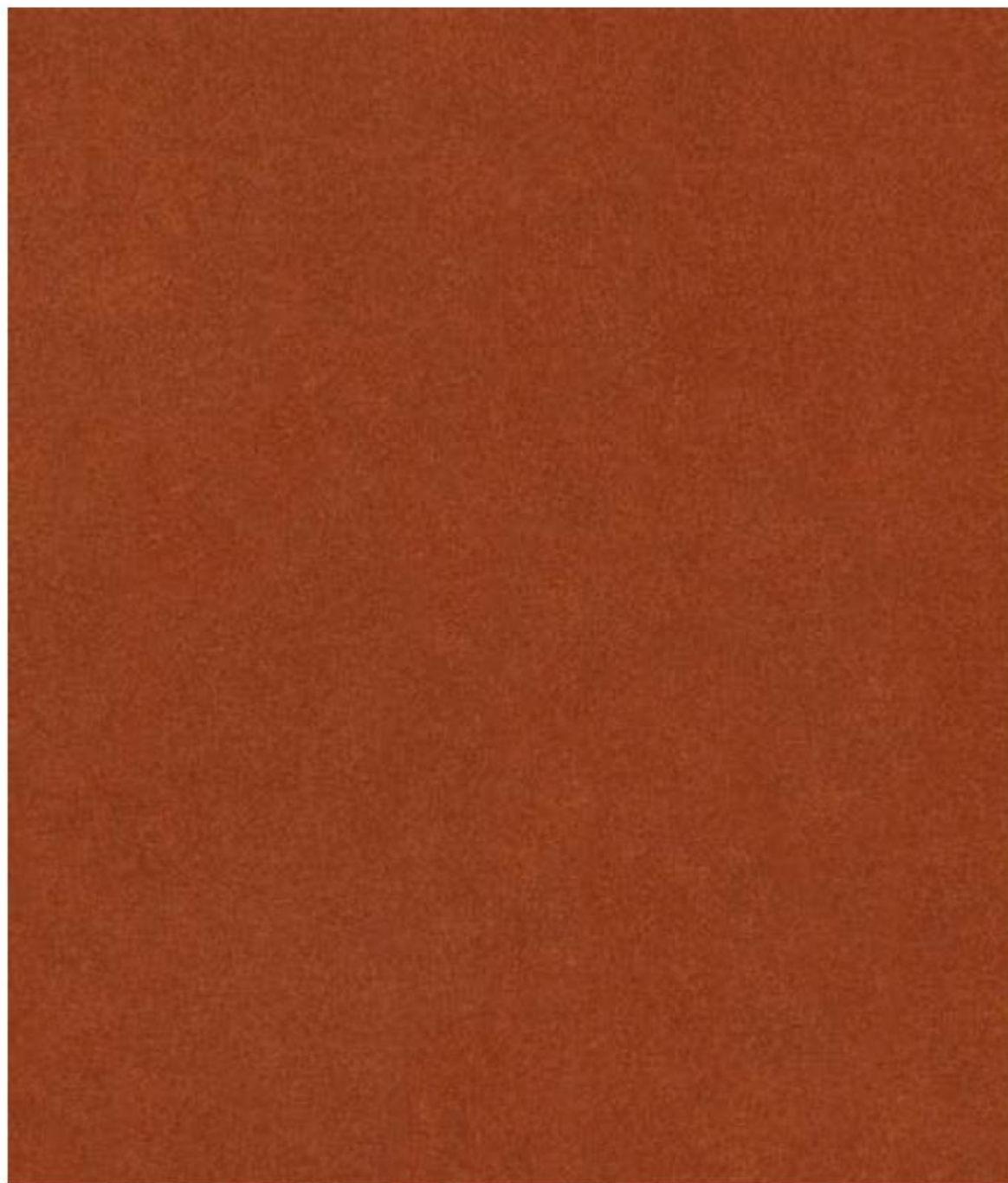
Stálobarevnost na světle / light resistance

**6**

Čistitelná vodou / aqua clean

**Neobsahuje žádné látky PFC (C8) / PFC free**

**Antivirová, poskytuje trvalou ochranu před viry, bakteriemi a plísněmi /  
virus protect, safe front**



# NORDIC

2<sup>nd</sup> price group



101



114



108



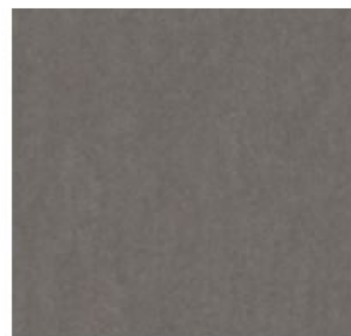
113



132



117



116



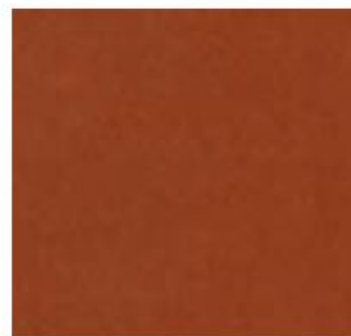
115



128



129



125

The sample is provided as a guide only. Therefore an exact match can not be guaranteed. Color differences between individual production batches are allowed.

# STRONG

II. cenová kategorie

2<sup>nd</sup> price group

Složení /composition

**100% Polyester**

Plošná hmotnost / weight

**381 g/m<sup>2</sup> ± 5%**

Snižená hořlavost (cigaret. test / flame retardant

**BS 5852: Part 1: 1979, source 0 (cigarette)**

Odolnost v oděru / Martindale test

**50.000 cyklů / rubů**

Odolnost proti žmolování / pilling resistance

**4/5**

Stálobarevnost na světle / light resistance

**5**

**Jednoduché čištění vodou / easy clean with water**

**Vhodná k domácím mazlíčkům / pet friendly**

**Antivirová, poskytuje trvalou ochranu před viry, bakteriemi a plísněmi. / virus protect**





# STRONG

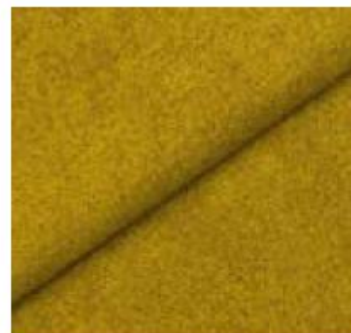
2<sup>nd</sup> price group



05



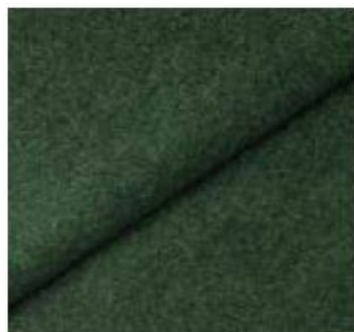
04



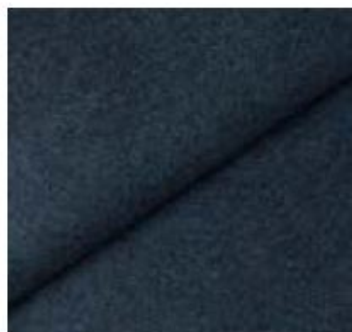
07



06



09



10



12



13



14

The sample is provided as a guide only. Therefore an exact match can not be guaranteed. Color differences between individual production batches are allowed.

# SALAK

III. cenová kategorie

3<sup>rd</sup> price group

Složení /composition

**91% polyester, 9% viscose**

Plošná hmotnost / weight

**363 g/m<sup>2</sup>**

Snižená hořlavost (cigaret. test / flame retardant

**BS 5852: Part 1: 1979, source 0 (cigarette),  
US Cal. Bull. 117, NFPA 260**

Odolnost v oděru / Martindale test

**30.000 cyklů / rubs**

Odolnost proti žmolkování / pilling resistance

**4-5**

Stálobarevnost na světle / light resistance

**6**





# SALAK

3<sup>rd</sup> price group



24 sesame



28 pheasant



33 midnight



09 apricot



18 shark



# TWIG

III. cenová kategorie  
3<sup>rd</sup> price group

Složení / composition  
**100% recycled polyester**

Plošná hmotnost / weight  
**318 g/m<sup>2</sup> ± 5%**

Snižená hořlavost (cigaret. test / flame retardant  
**BS 5852: Part 1: 1979, source 0 (cigarette)**

Odolnost v oděru / Martindale test  
**40.000 cyklů / rubs**

Odolnost proti žmolování / pilling resistance  
**5**

Stálobarevnost na světle / light resistance  
**7**

**Jednoduché čištění vodou / easy clean with water**  
**Vhodná k domácím mazlíčkům / pet friendly**



# TWIG

3<sup>rd</sup> price group



01



02



03



06



# ESTIVO

III. cenová kategorie

3<sup>rd</sup> price group

Složení /composition

**40% bavlna, 25% viskoza, 10% len, 20% akryl, 5% polyester**

Plošná hmotnost / weight

**548 g/m<sup>2</sup> ± 5%**

Snižená hořlavost (cigareta. test / flame retardant

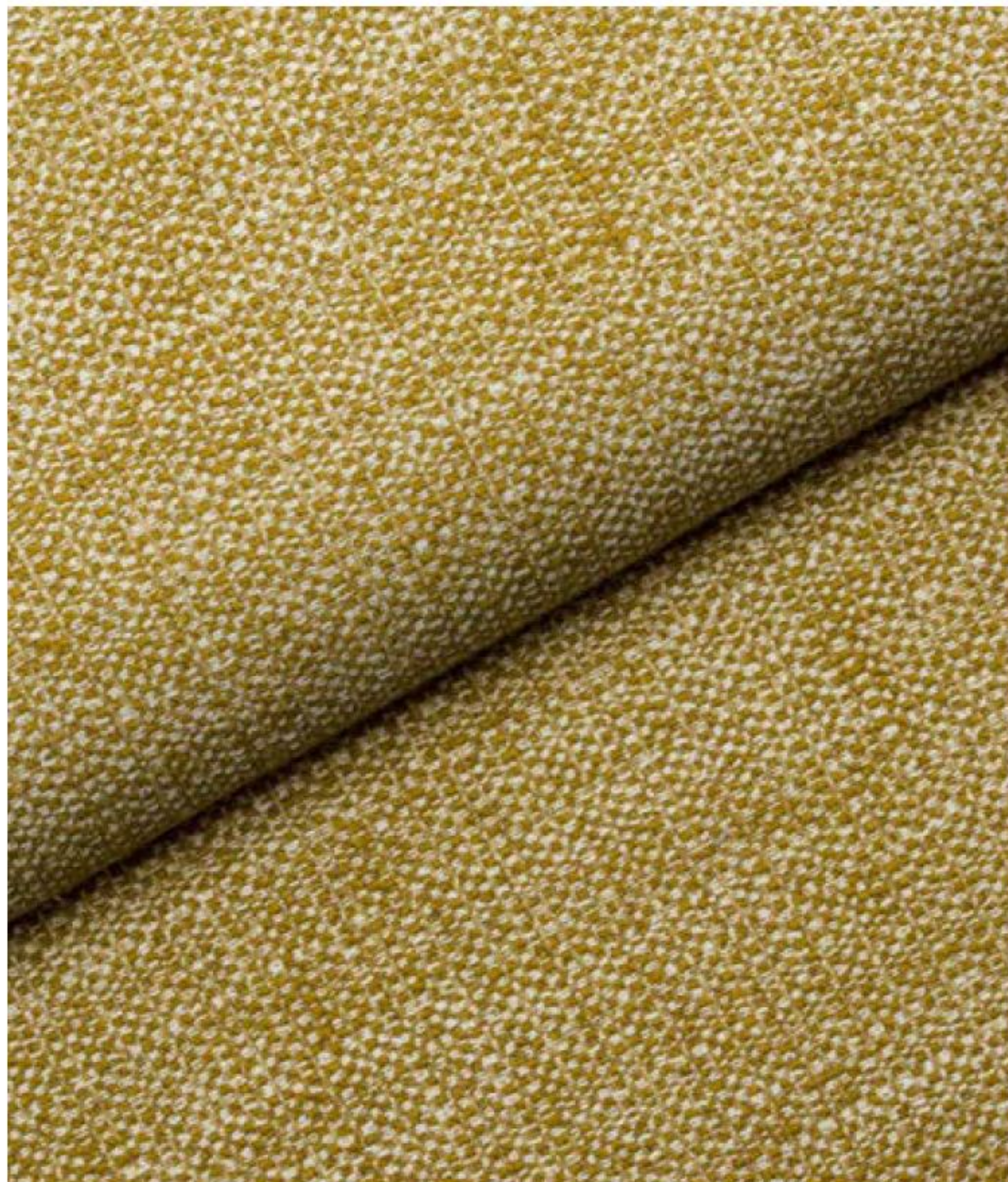
**BS 5852: Part 1: 1979, source 0 (cigarette)**

Odolnost v oděru / Martindale test

**35.000 cyklů / rubs**

Odolnost proti žmolkování / pilling resistance

**4**



# ESTIVO

3<sup>rd</sup> price group



01



02



03



05



# NEON

III. cenová kategorie

3<sup>rd</sup> price group

Složení /composition

**66% acrylic; 34% Polyester**

Plošná hmotnost / weight

**570 g/m<sup>2</sup> ± 5%**

Snižená hořlavost (cigaret. test / flame retardant

**BS 5852: Part 1: 1979, source 0 (cigarette)**

Odolnost v oděru / Martindale test

**40.000 cyklů / rubs**

Odolnost proti žmolkování / pilling resistance

**4**

Stálobarevnost na světle / light resistance

**5**

lehké čištění vodou / easy water cleaning

vodoodpudivá / water repellent



# NEON

3<sup>rd</sup> price group



08



03



04



05

The sample is provided as a guide only. Therefore an exact match can not be guaranteed. Color differences between individual production batches are allowed.



# VARENNA

III. cenová kategorie

3<sup>rd</sup> price group

Složení / composition

**80% POLIESTER, 16% MODAKRYL, 4% WISKOZA**

Plošná hmotnost / weight

**432 g/m<sup>2</sup>**

Snižená hořlavost (cigaret. test / flame retardant

**EN10211-2, BS5852 0-1**

Odolnost v oděru / Martindale test

**>100.000 cyklů / rubs**

Odolnost proti žmolkování / pilling resistance

**5**

Stálobarevnost na světle / light resistance

**5**

Čistitelná vodou / aqua clean

**Neobsahuje žádné látky PFC (C8) / PFC free**

**Antivirová, poskytuje trvalou ochranu před viry, bakteriemi a plísněmi /  
virus protect, safe front**



# VARENNA

3<sup>rd</sup> price group



213



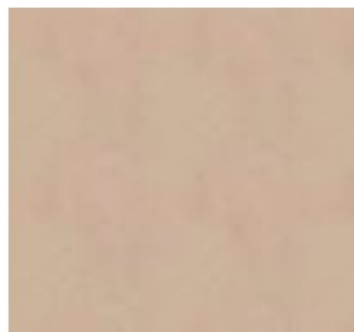
13



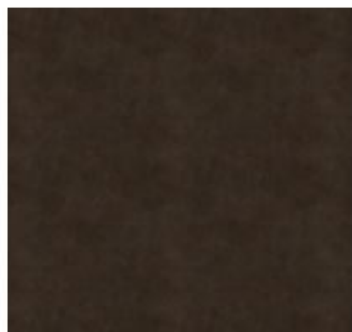
300



80



245



131



59



82



105



62

Próbki tkanin mają charakter poglądowy. Nie należy oczekiwać idealnej kopii, nie gwarantujemy idealnego odwzorowania kolorów w rzeczywistości. Dopuszczalne są różnice kolorystyczne między poszczególnymi partiami produkcyjnymi.

The sample is provided as a guide only. Therefore an exact match can not be guaranteed. Color differences between individual production batches are allowed.



# TITAN

III. cenová kategorie

3<sup>rd</sup> price group

Složení /composition

**73% POLIESTER, 19% MODAKRYL, 8% BAWELNA**

Plošná hmotnost / weight

**421 gr/m2**

Snižená hořlavost (cigaret. test / flame retardant

EN10211-2, BS5852 0-1

Odolnost v oděru / Martindale test

**60.000 cykl. / rubs**

Odolnost proti žmolkování / pilling resistance

**5**

Stálobarevnost na světle / light resistance

**5**

Čistitelná vodou / aqua clean

**Neobsahuje žádné látky PFC (C8) / PFC free**

**Antivirová, poskytuje trvalou ochranu před viry, bakteriemi a plísněmi /  
virus protect, safe front**

# TITAN

3<sup>rd</sup> price group



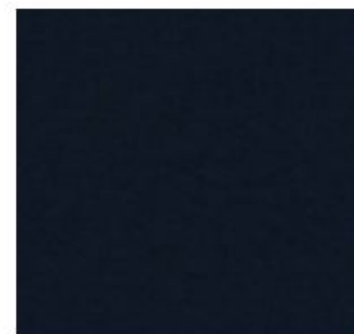
300



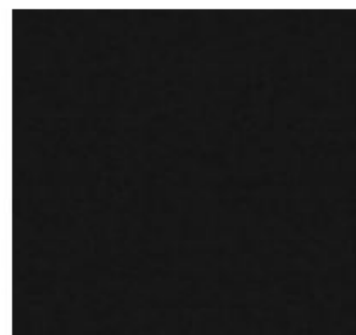
45



53



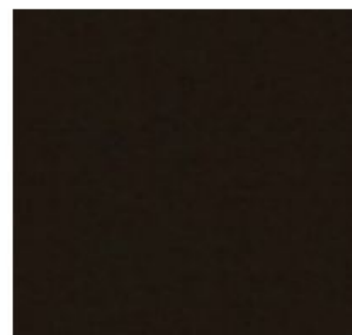
311



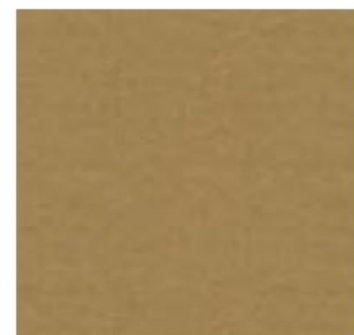
999



92



07



48



250



30

The sample is provided as a guide only. Therefore an exact match can not be guaranteed. Color differences between individual production batches are allowed.



# WOOL

III. cenová kategorie

3<sup>rd</sup> price group

Složení /composition

**70% recycled wool, 20% polyester, 5% polyamid, 5% other fibres**

Plošná hmotnost / weight

**325 g/m<sup>2</sup>**

Snižená hořlavost (cigaret. test / flame retardant

**EN10211-2, BS5852 0-2, US Cal. Bull. 117**

Odolnost v oděru / Martindale test

**100.000 cykl / rubs**

Odolnost proti žmolkování / pilling resistance

**4-5**

Stálobarevnost na světle / light resistance

**4-5**



# WOOL

3<sup>rd</sup> price group



45 mist



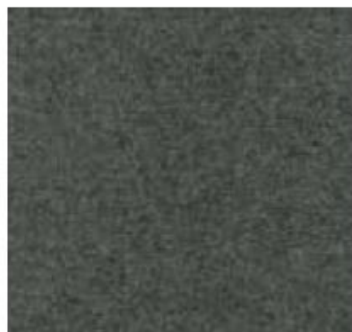
16 cloud



49 icycle



03 silver



04 pewter



08 chinchilla



62 sienna



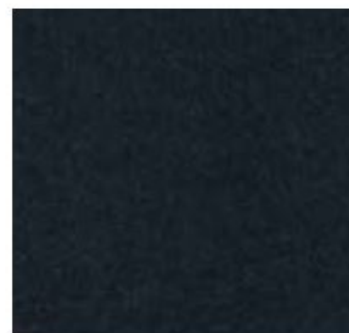
63 mustard



17 biscuit



41 sorbet



48 storm

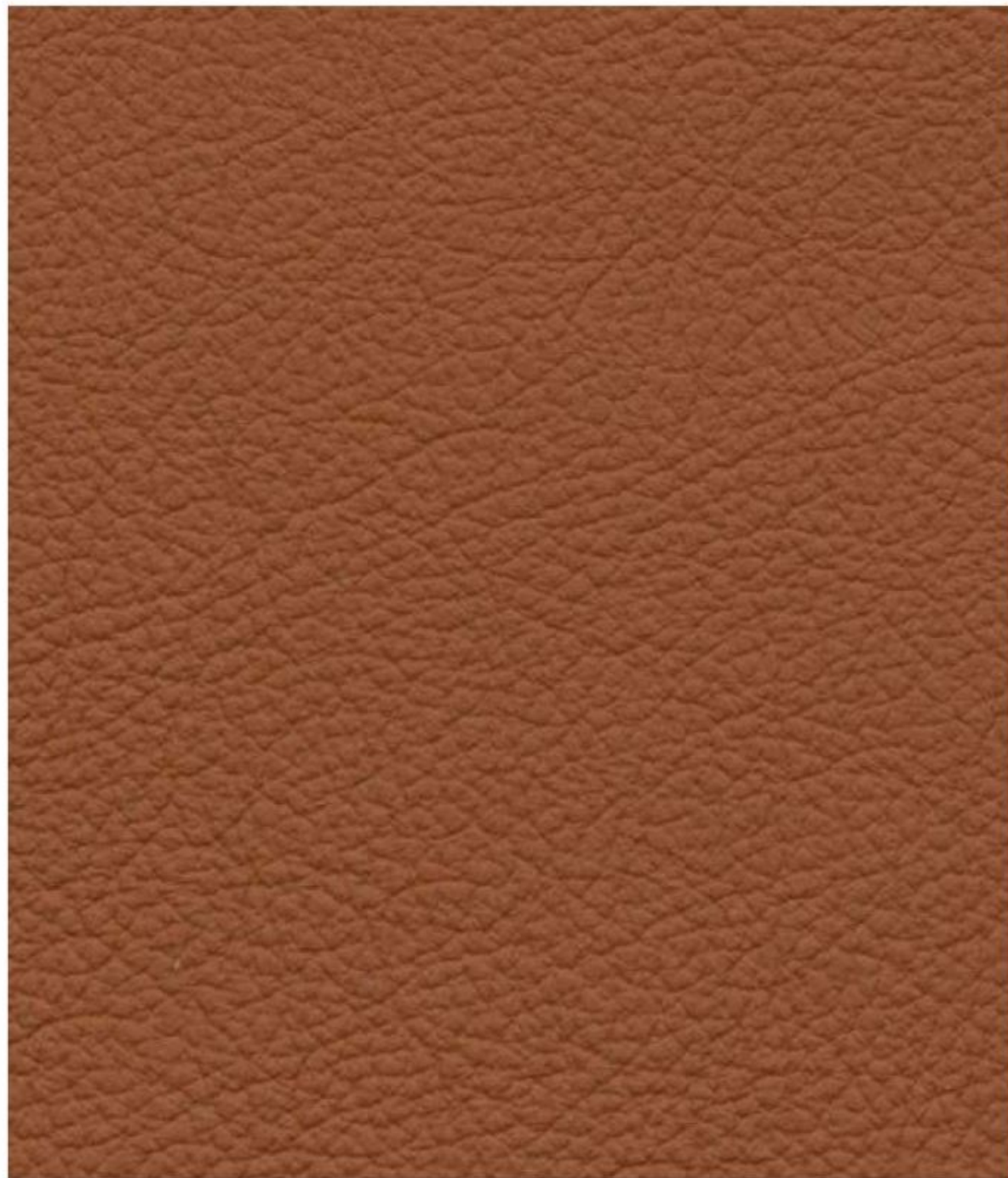
The sample is provided as a guide only. Therefore an exact match can not be guaranteed. Color differences between individual production batches are allowed.



# HERMES

IV. cenová kategorie  
4<sup>th</sup> price group

Přírodní kůže / natural leather



# HERMES

4<sup>th</sup> price group



Bordo



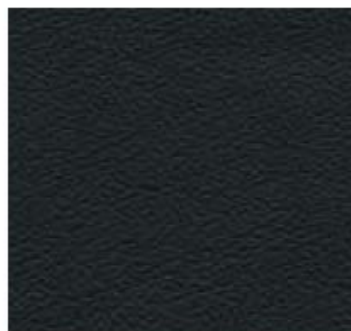
Verde



Kobalt



Cognac



Nero



Antracite



Mocca



Sand



Djerba

The sample is provided as a guide only. Therefore an exact match can not be guaranteed. Color differences between individual production batches are allowed.